





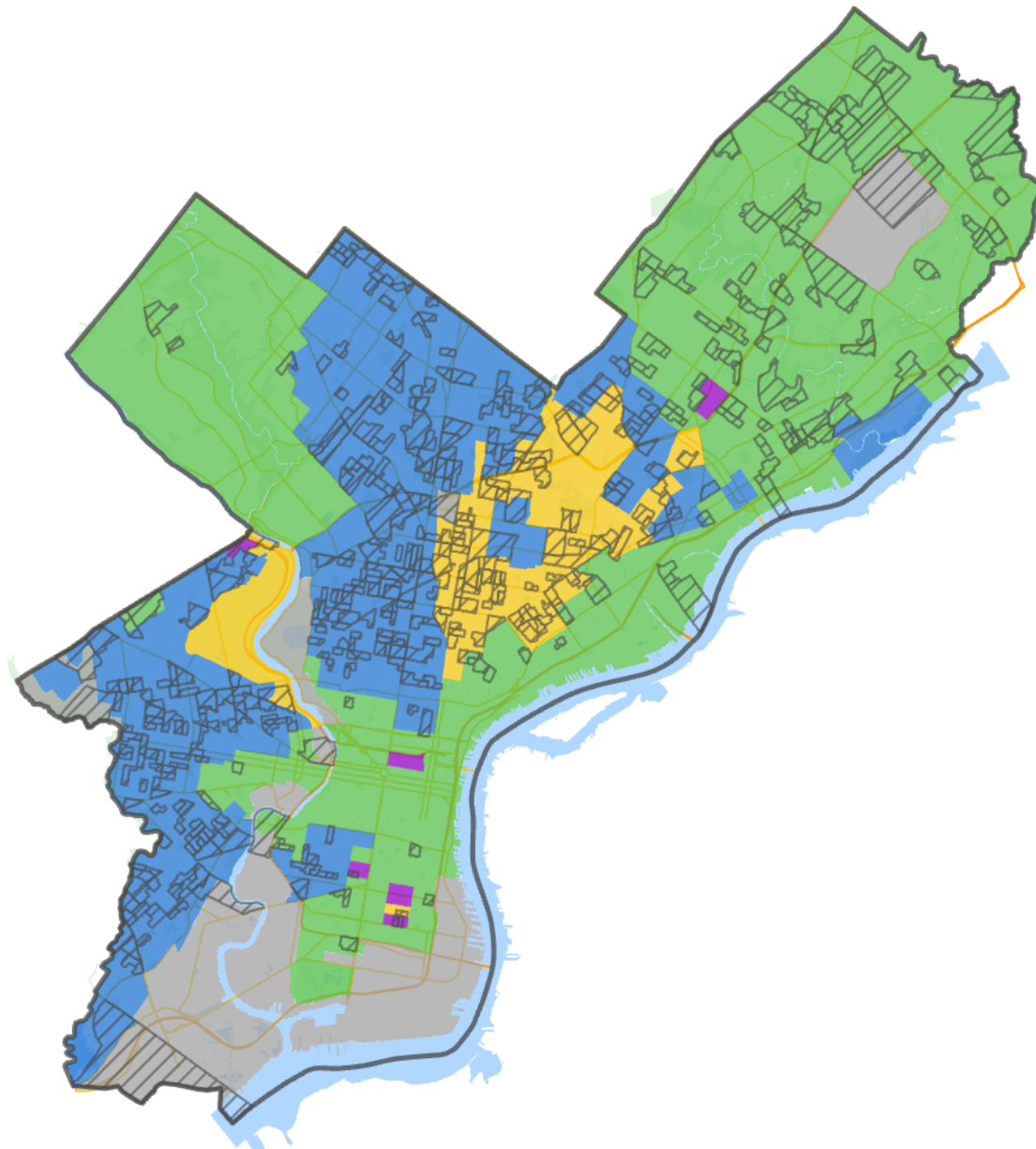


2022 General Election: Race/Ethnicity & Misdated/Undated Mail-In Ballot Submissions by Political Division in Philadelphia

Of the 1703 political divisions in Philadelphia, 1201 (70.5%) contain at least one record of a misdated or undated mail-in ballot submission. In 434 political divisions (25.5%), the rate of misdated or undated mail-in ballot submissions was greater than 3.4%, representing the most affected divisions.

295 (68.0%) of the 434 most affected political divisions intersect with Census Tracts in Philadelphia where the predominate racial/ethnic group is Black or African American. 112 (25.8%) divisions intersect tracts where the predominate racial/ethnic group is Non-Hispanic White. 84 (19.3%) of divisions intersect tracts where the predominate racial/ethnic group is Hispanic or Latino. 5 (1.2%) divisions intersect tracts where the predominate racial group is Asian.

-  >3.4% Mail-In Ballot Submission Issues
-  Asian Population
-  Black or African American Population
-  Hispanic or Latino Population
-  Non-Hispanic White Population
-  No Data Available



0 5 10 Miles